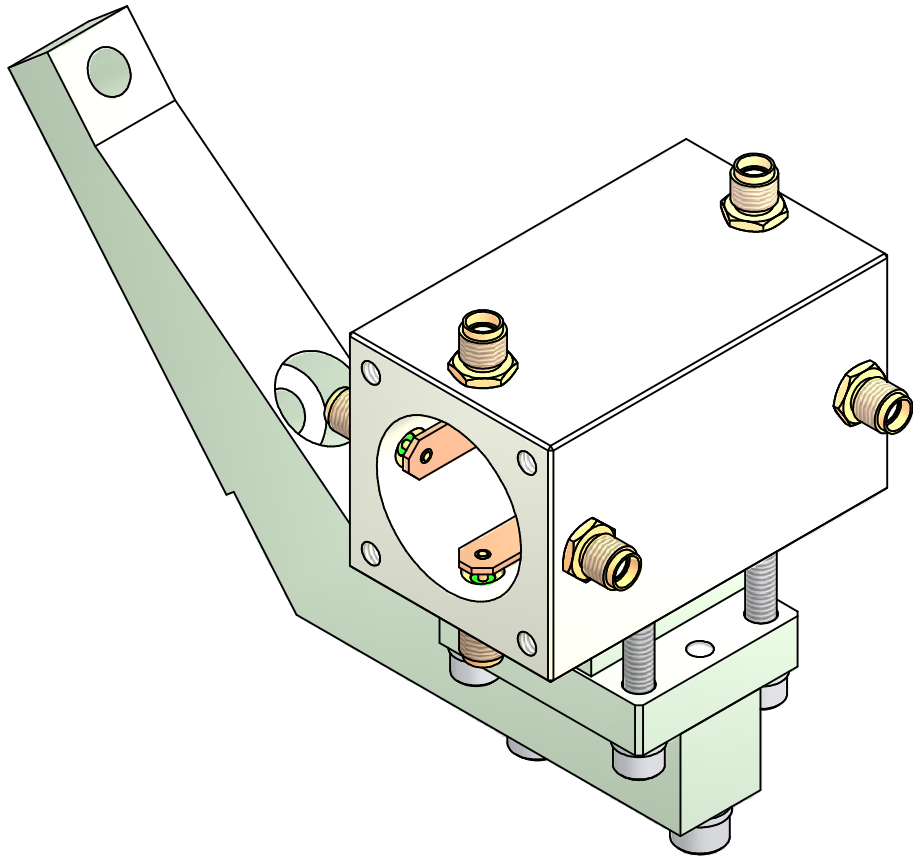
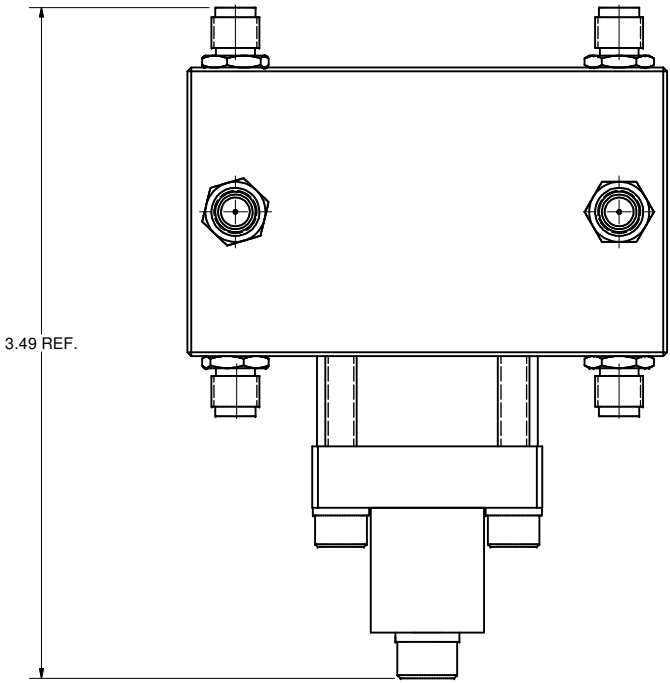
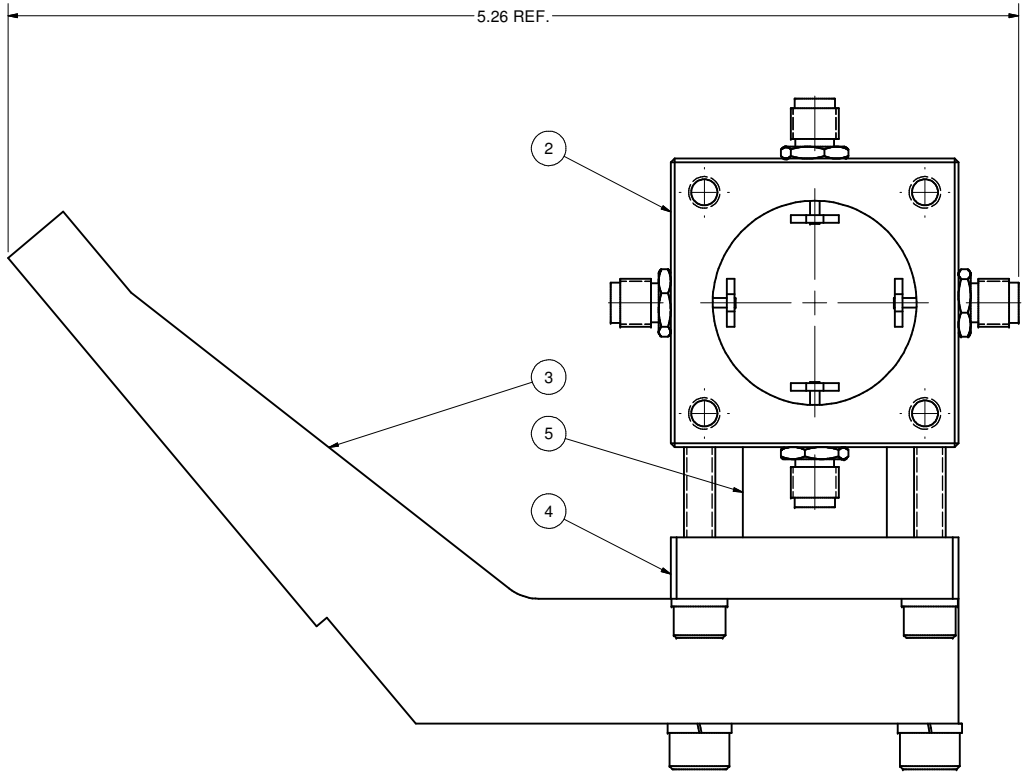
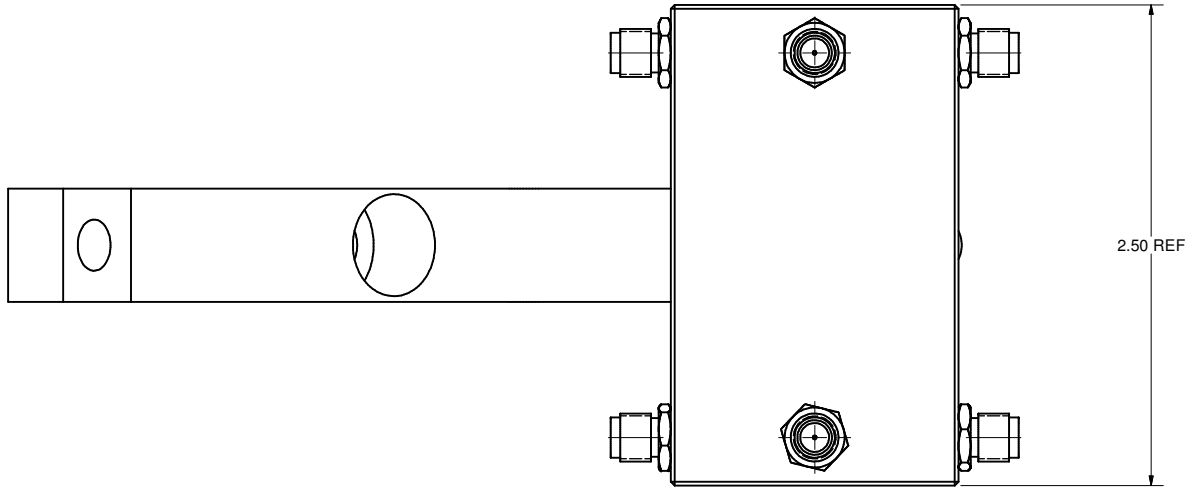


REVISIONS				
SYM.	ZONE	DESCRIPTION	DATE	APP.
A		Updated views to reflect changes to item #3.	2/26/07	TIO
B		PART INFO BLOCK ADDED	9/13/07	VM



1 WPM BLOCK SUPPORT ASSEMBLY
FILE NAME: 7102-040
SHEET NO.: 1
DFT. SCALE: 2:1
MATERIAL:
QTY: 5 PER CRYOMODULE
NOTES:

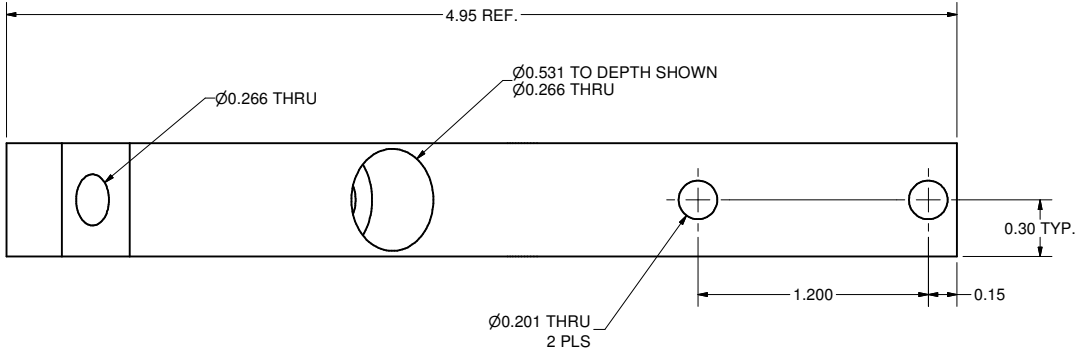
FOR MACHINING LUBRICANT USE ONLY
ALKALINE DETERGENT LUBRICANT CIMSTAR 40
OR EQUIVALENT APPROVED BY CORNELL LEPP

TECHNICAL RESOURCE APPROVALS REQUIRED BEFORE FABRICATION			
	OK	DATE	N/A
DRAFTING (O'Connell):			
MACHINE SHOP (Kaminski):			
CHEMISTRY (Conklin):			
ELECTRONICS SHOP (Barley):			
FURNACE BRAZING (Sherwood):			
BEAM WELDING (Sears):			
WELDING OTHER (Gallagher):			
UTILITIES INTEGRATION (Gallagher):			
STOCKROOMS (Lockwood):			

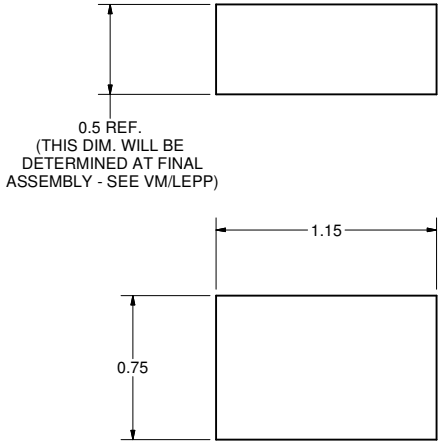
PRINT DISTR.	CR-1
D	7102-040
B	REV. 1 OF 2

9	-	#10-24 x 1 Socket Head Cap Screw, 316 SS	2			McMaster-Carr's 92185A247	
8	-	#10 Spring Washer, 316 SS	2			McMaster-Carr's 92147A430	
7	-	#8-32 x 1 Socket Head Cap Screw, 316 SS	4			McMaster-Carr's 92185A199	
6	-	#8 Spring Washer, 316 SS	4			McMaster-Carr's 92147A425	
5	Sheet 2	WPM SPACER	1				
4	Sheet 2	WPM SUPPORT PLATE	1				
3	Sheet 2	WPM BRACKET	1				
2	7102-039	WPM BLOCK	1				
1	Sheet 1	WPM BLOCK SUPPORT ASSEMBLY	X				
ITEM	DWG. NO.	DESCRIPTION	QUANTITY			REMARKS	REV.
			G1	G2	G3		
PLOT DATE: 9/20/2007 CAD FILE NAME: 7102-040.idw							
UNLESS OTHERWISE SPECIFIED: DIMENSIONS ARE IN INCHES: TOLERANCES ON: .00 ± .010 .000 ± .005 FRACTIONS ± 1/64 ANGLES ± 0.5° ALL SURFACES		CORNELL UNIVERSITY LEPP LABORATORY FOR ELEMENTARY-PARTICLE PHYSICS CORNELL UNIVERSITY Floyd R. Newman Laboratory Ithaca, NY 14853					
ERL INJECTOR CRYOMODULE WPM BLOCK SUPPORT Assembly Views		DRAWN BY SX	DRAWN FOR M.LIEPE	DATE 2/13/2007	SCALE D	7102-040 SH. NO. 1 OF 2	REV. B

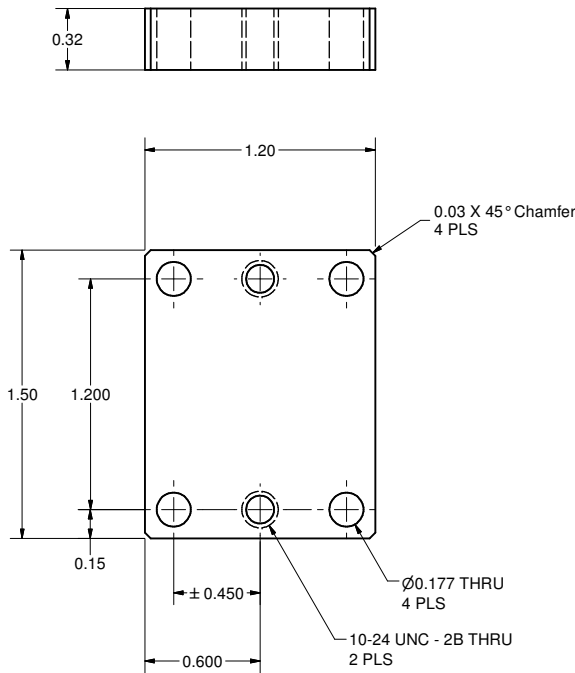
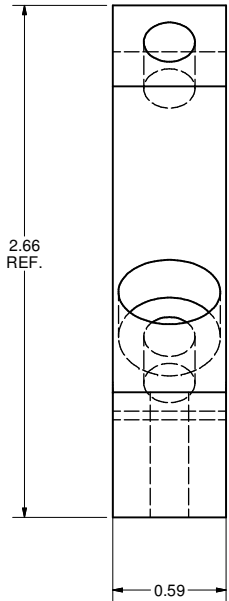
REVISIONS				
SYM.	ZONE	DESCRIPTION	DATE	APP.
A	D8/E8	Modified Item #3: 0.38 was 0.50, 12 deg was 10 deg.	2/26/07	TIO



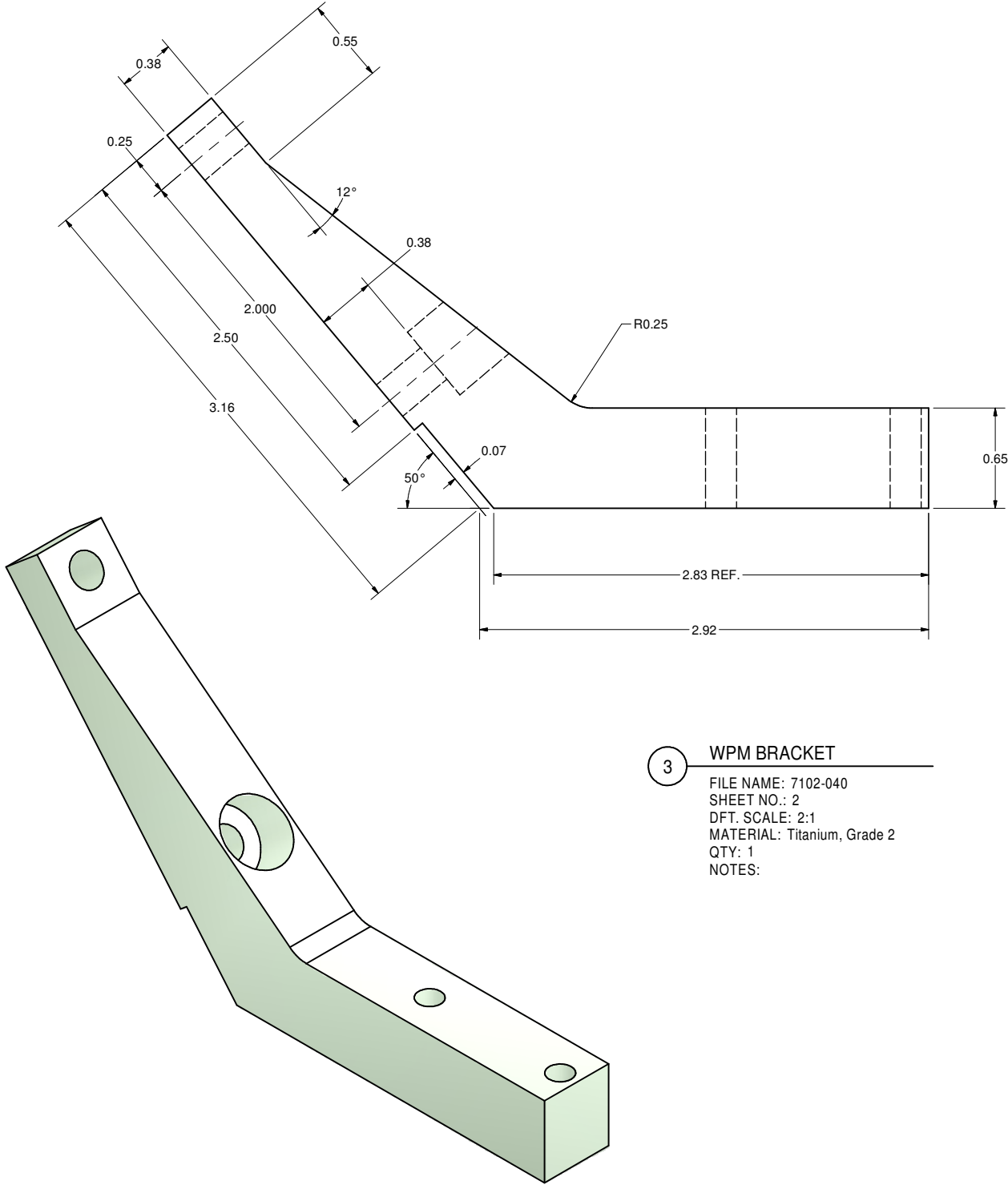
3 WPM BRACKET
FILE NAME: 7102-040
SHEET NO.: 2
DFT. SCALE: 2:1
MATERIAL: Titanium, Grade 2
QTY: 1
NOTES:



5 WPM SPACER
FILE NAME: 7102-040
SHEET NO.: 2
DFT. SCALE: 2:1
MATERIAL: Titanium, Grade 2
QTY: 1
NOTES:



4 WPM SUPPORT PLATE
FILE NAME: 7102-040
SHEET NO.: 2
DFT. SCALE: 2:1
MATERIAL: Titanium, Grade 2
QTY: 1
NOTES:



FOR MACHINING LUBRICANT USE ONLY
ALKALINE DETERGENT LUBRICANT CIMSTAR 40
OR EQUIVALENT APPROVED BY CORNELL LEPP

TECHNICAL RESOURCE APPROVALS REQUIRED BEFORE FABRICATION			
	OK	DATE	N/A
DRAFTING (O'Connel):			
MACHINE SHOP (Kaminski):			
CHEMISTRY (Conklin):			
ELECTRONICS SHOP (Barley):			
FURNACE BRAZING (Sherwood):			
BEAM WELDING (Sears):			
WELDING OTHER (Gallagher):			
UTILITIES INTEGRATION (Gallagher):			
STOCKROOMS (Lockwood):			

ITEM	DWG. NO.	DESCRIPTION	G1	G2	G3	REMARKS	REV.
PRINT DISTR.	7102-040	ERL INJECTOR CRYOMODULE WPM BLOCK SUPPORT WPM Bracket, Spacer, and Support Part Details					
CR-1	7102-040	UNLESS OTHERWISE SPECIFIED: DIMENSIONS ARE IN INCHES: TOLERANCES ON: .00 ± .010 .000 ± .005 FRACTIONS ± 1/64 ANGLES ± 0.5° ALL SURFACES					
REV.	A	CORNELL UNIVERSITY FLOYD R. NEWMAN LABORATORY ITHACA, NY 14853					
CHECKED BY: VM	DRAWN BY: SX	DRAWN FOR: M.LIEPE	DATE: 2/13/2007	SCALE: D	7102-040	REV. A	
APPROVED BY: VM					SH. NO. 2 OF 2		